

# WENDELL FORD AIRPORT PROPERTY



CHAVIES, PERRY COUNTY, KENTUCKY

37° 22' 56.60" N - 83° 15' 25.65" W



**Charles Sexton**

CEO

270.832.5990

chuck@OneEastKY.com

## Table of Contents

1. AEROrady Certified
2. Aerial Map
3. Aerospace in Kentucky
4. 500 Mile Interstate Map
5. Regional Transportation Map
6. Local Map

***“Elevating Industry”***

# WENDELL FORD AIRPORT PROPERTY



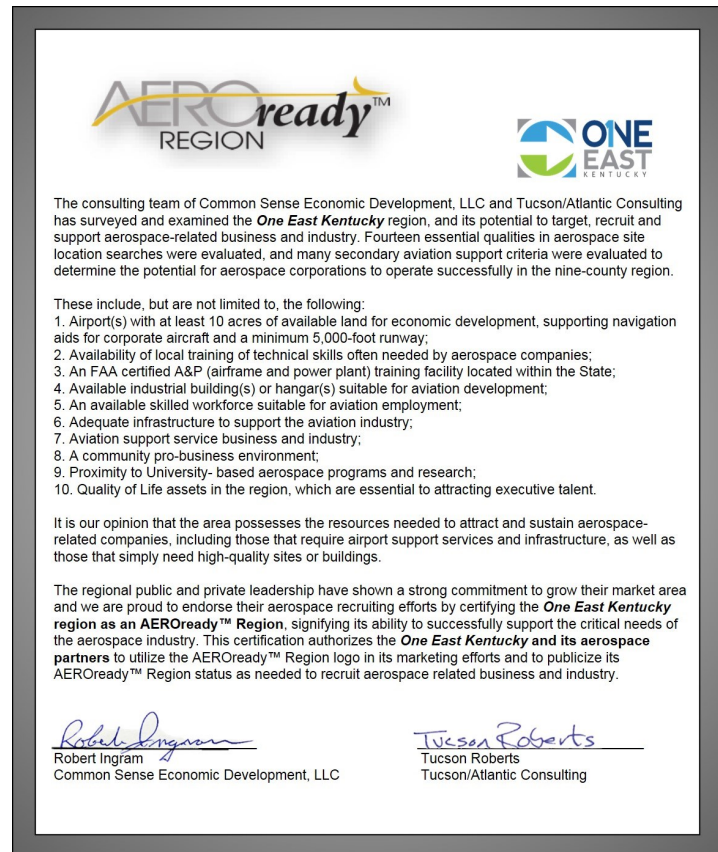
1. AEROready Certified

CHAVIES, PERRY COUNTY, KENTUCKY 37° 22' 56.60"N - 83° 15' 25.65"W

## The One East Kentucky Region has been certified as AEROready by 3rd Party Consultants.

*A 4-month study concluded that our region has the necessary attributes for aviation and aerospace related industries to thrive.*

- 7,700 Individuals with skill sets necessary to the Aerospace and Aviation Industry
- FAA Certified A&P Mechanics training facility
- eKentucky Advanced Manufacturing Institute—CNC Machining Fast Track Training
- Available Industrial Property within Parks and at Regional Airports
- Centrally located to Aerospace and Aviation Clusters in Kentucky, Ohio, Virginia and Tennessee
- University based Aerospace Programs and Research (Morehead State University, University of Kentucky)
- Local training available at multiple KCTCS Campuses
- Pro-Business Communities that are aggressively seeking new investment from companies



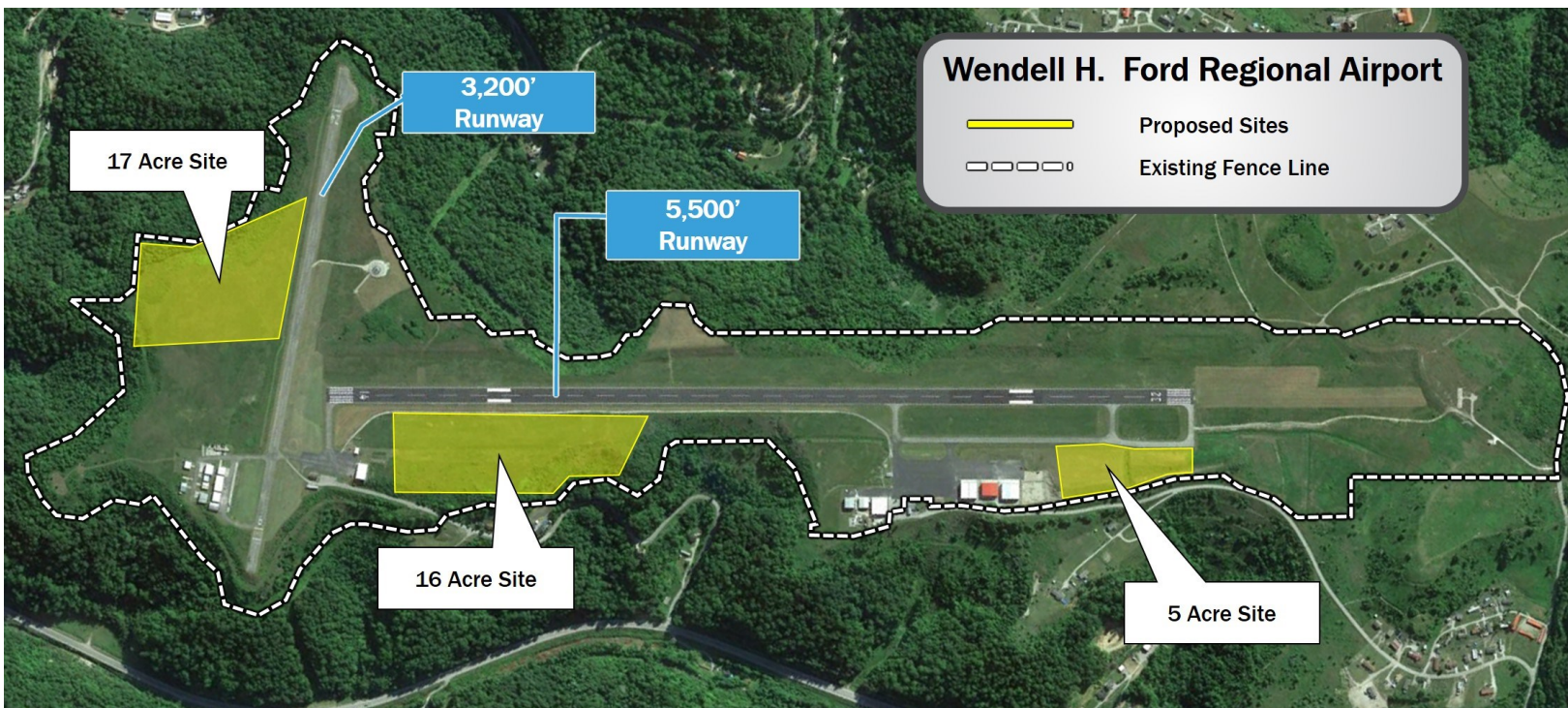
**“Elevating Industry”**

# WENDELL FORD AIRPORT PROPERTY

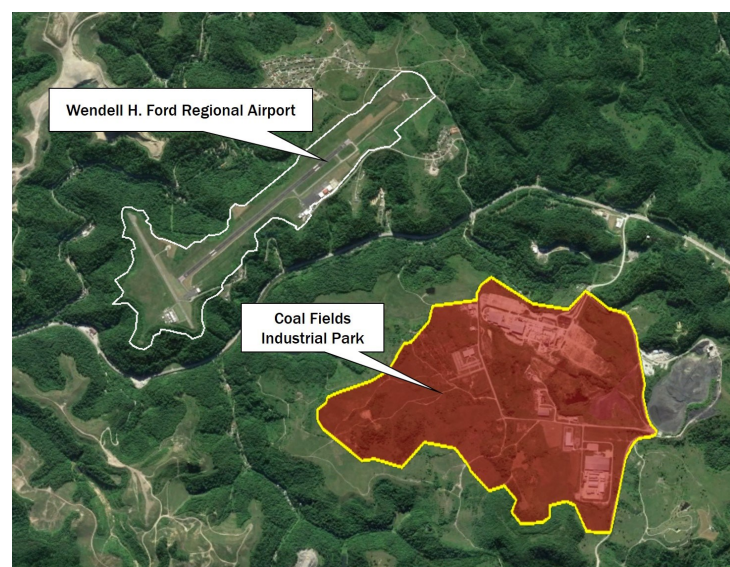


## 2. Aerial Map

CHAVIES, PERRY COUNTY, KENTUCKY 37° 22' 56.60" N - 83° 15' 25.65" W



- 5,500 Foot Runway
- 3,200 Foot Runway
- 3 Primary Sites Currently Inside Fence
- Adjacent to 300+ Acre Industrial Park
- RNAV (GPS), LOC, VOR
- 79% General Aviation, 13% Cargo, 8% Military



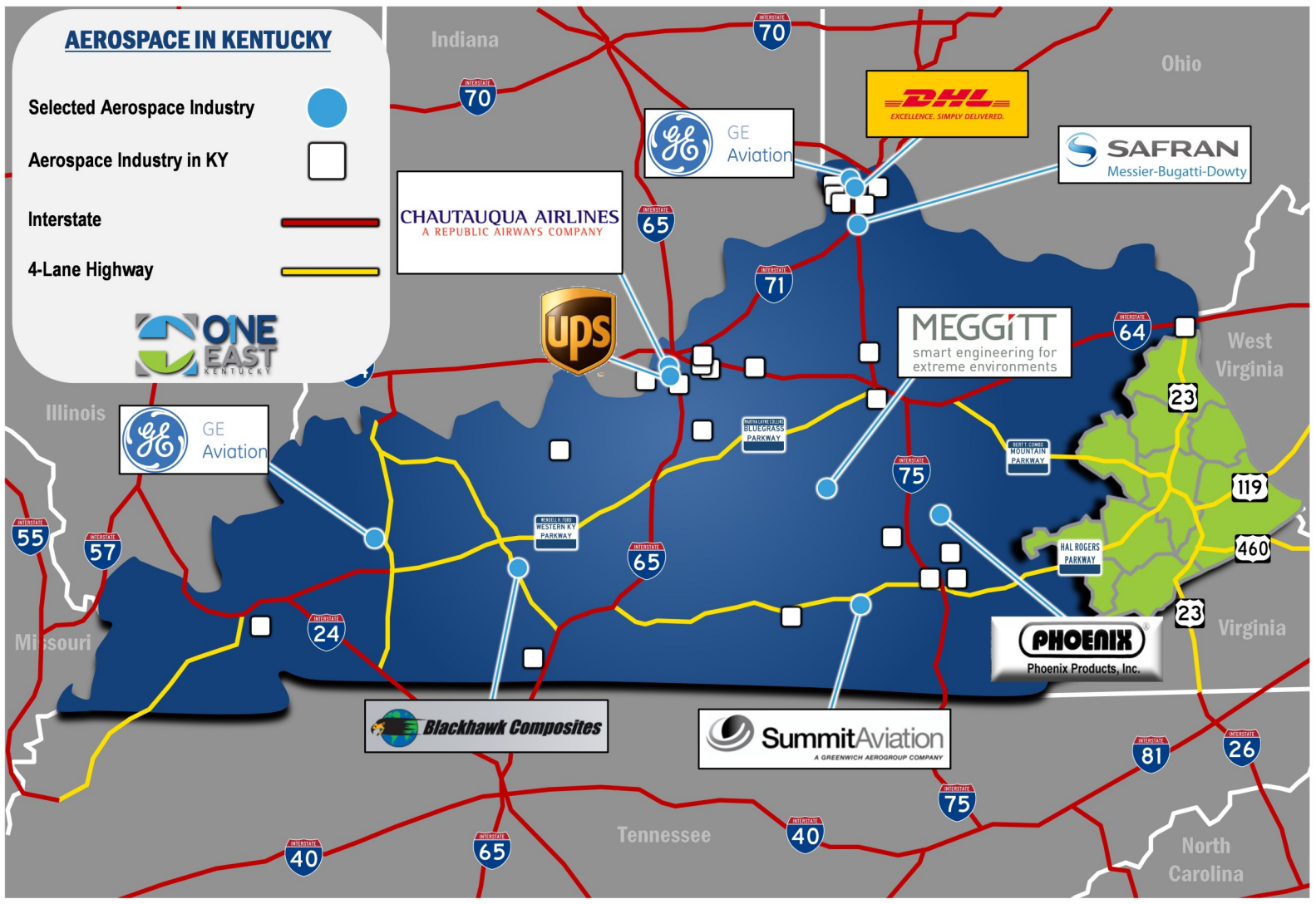
**“Elevating Industry”**

# WENDELL FORD AIRPORT PROPERTY



## 3. Aerospace in Kentucky

CHAVIES, PERRY COUNTY, KENTUCKY 37°22'56.60"N - 83°15'25.65"W

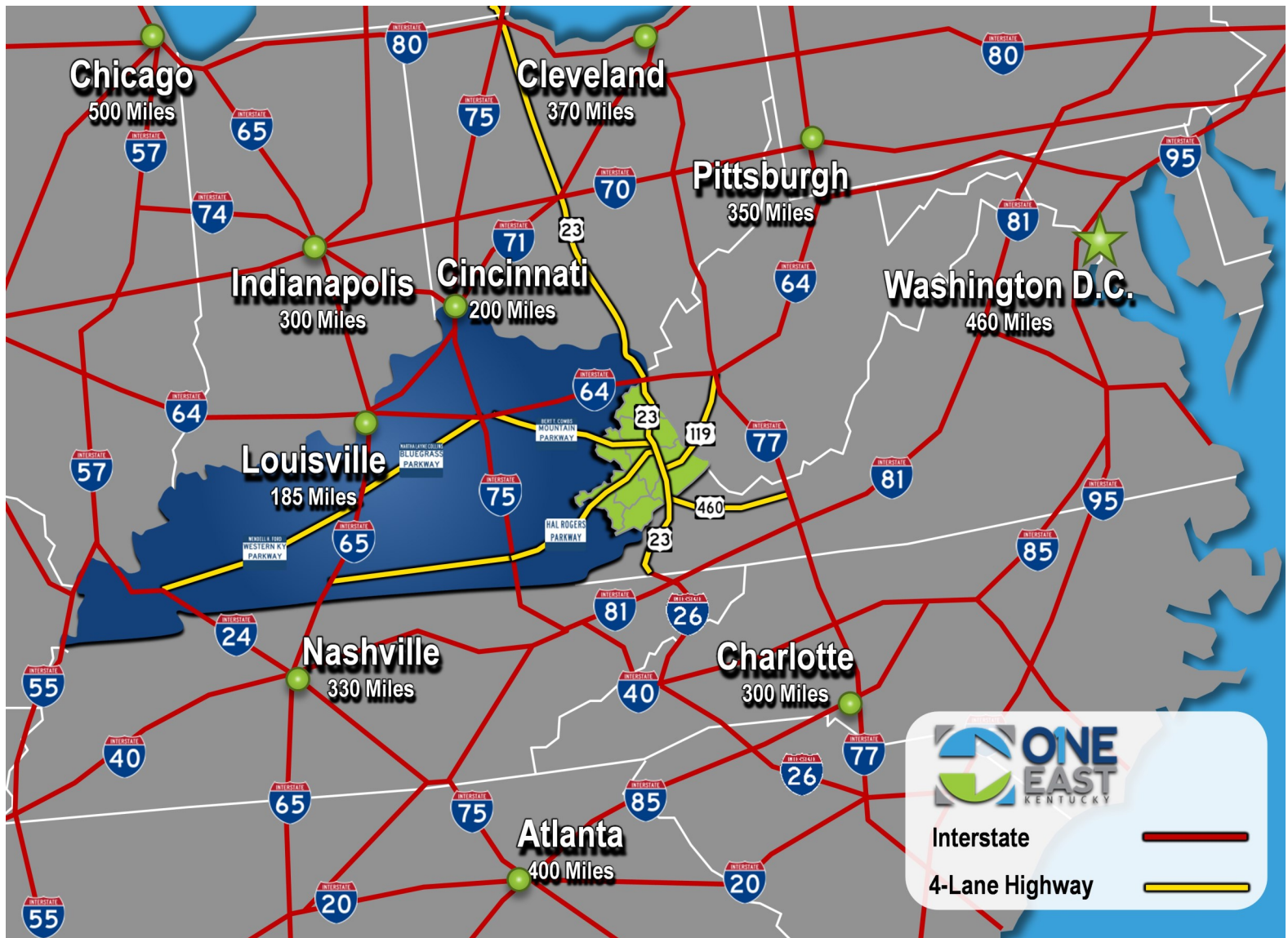


# WENDELL FORD AIRPORT PROPERTY



## 4. 500 Mile Interstate Map

CHAVIES, PERRY COUNTY, KENTUCKY 37° 22' 56.60"N - 83° 15' 25.65"W



*“Elevating Industry”*

# WENDELL FORD AIRPORT PROPERTY



## 5. Regional Transportation Map

CHAVIES, PERRY COUNTY, KENTUCKY 37°22'56.60"N - 83°15'25.65"W



*“Elevating Industry”*

# WENDELL FORD AIRPORT PROPERTY



## 6. Local Map

CHAVIES, PERRY COUNTY, KENTUCKY 37° 22' 56.60"N - 83° 15' 25.65"W



*“Elevating Industry”*