

# COAL FIELDS INDUSTRIAL PARK



## Property Advantages:

- ⇒ 380 Acres Available
- ⇒ FedEx Facility Located in park
- ⇒ All Utilities Available

CHAVIES, PERRY COUNTY, KENTUCKY

37° 22' 09.94" N - 83° 16' 41.25" W



**Charles Sexton**

CEO

270.832.5990

chuck@OneEastKY.com

## Table of Contents

1. Aerial Map
2. Infrastructure Map
3. Regional Transportation Map
4. Local Map
5. Data

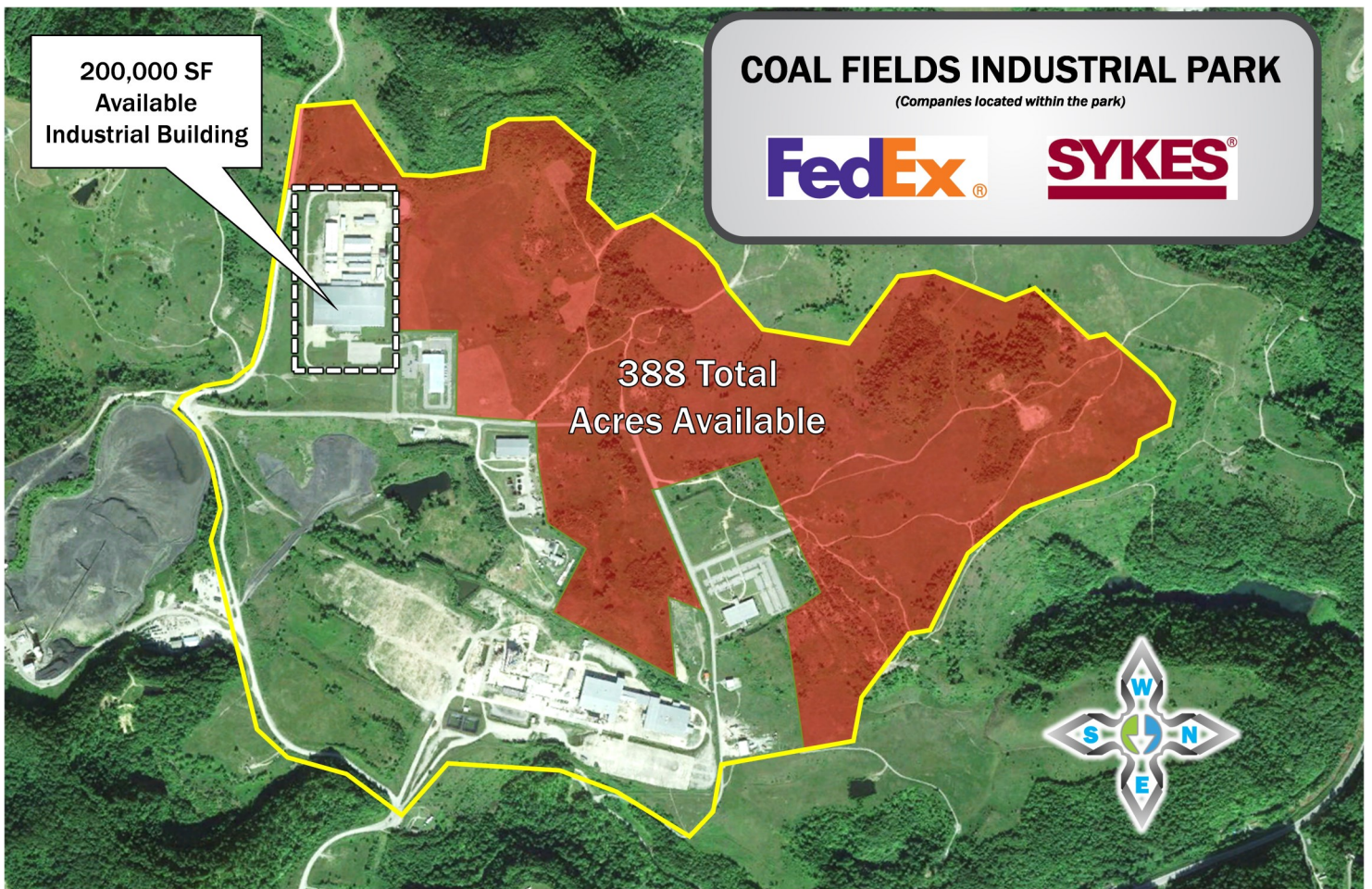
***“Elevating Industry”***

# COAL FIELDS INDUSTRIAL PARK



## 1. Aerial Map

CHAVIES, PERRY COUNTY, KENTUCKY 37°22'09.94"N - 83°16'41.25"W



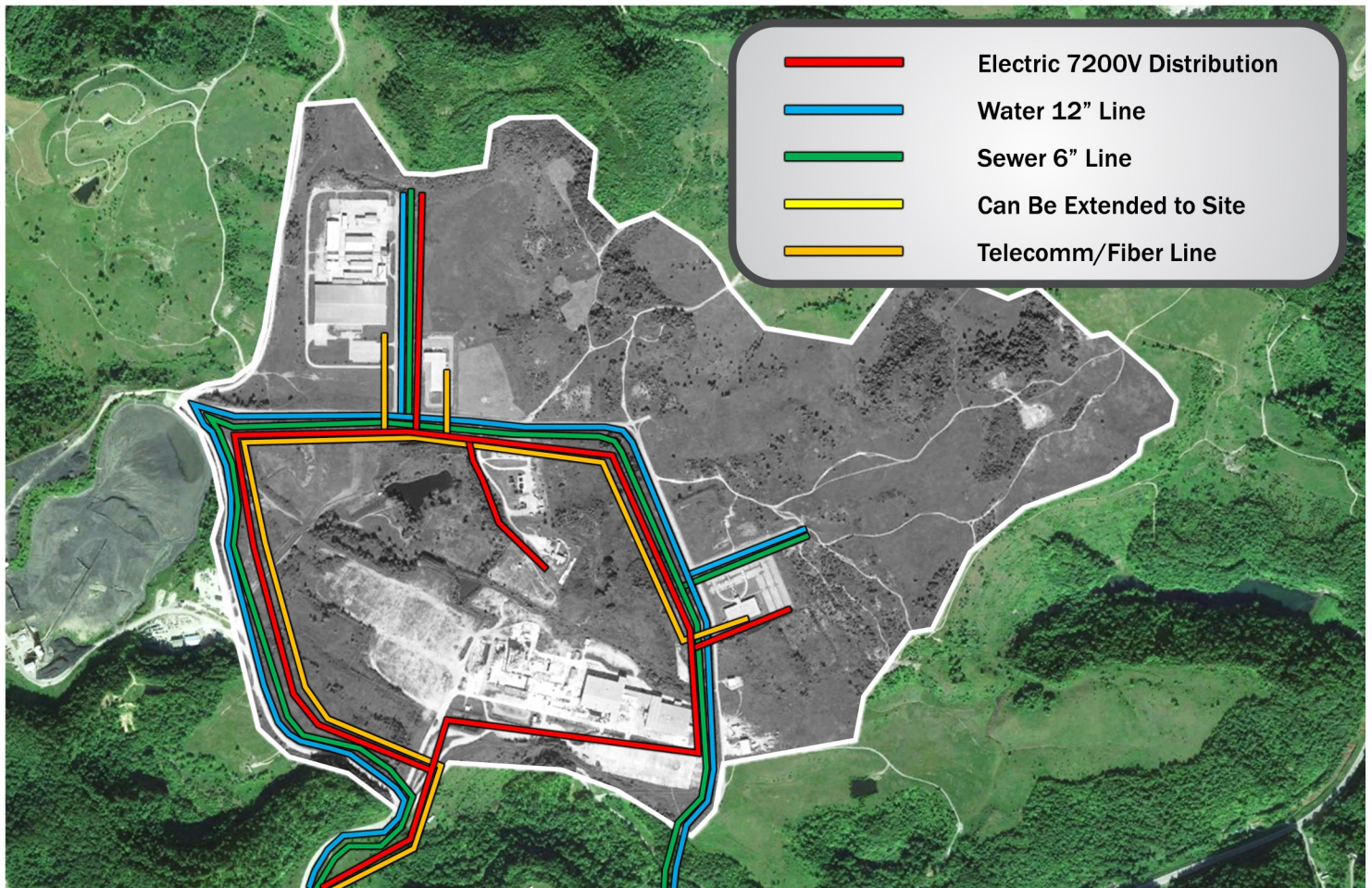
**“Elevating Industry”**

# COAL FIELDS INDUSTRIAL PARK



## 2. Infrastructure Map

CHAVIES, PERRY COUNTY, KENTUCKY 37°22'09.94"N - 83°16'41.25"W



***"Elevating Industry"***

# COAL FIELDS INDUSTRIAL PARK



## 3. Regional Transportation Map

CHAVIES, PERRY COUNTY, KENTUCKY 37°22'09.94"N - 83°16'41.25"W



*“Elevating Industry”*

# COAL FIELDS INDUSTRIAL PARK



## 4. Local Map

CHAVIES, PERRY COUNTY, KENTUCKY 37° 22' 09.94" N - 83° 16' 41.25" W



*“Elevating Industry”*

# COAL FIELDS INDUSTRIAL PARK



## 5. Data

CHAVIES, PERRY COUNTY, KENTUCKY 37°22'09.94"N - 83°16'41.25"W

### GENERAL INFORMATION

<b>Site Name:</b>	Coal Fields Industrial Park
<b>Owner/Broker:</b>	Coal Fields Regional Industrial Development Authority
<b>Address:</b>	Truss Joist Lane, Chavies, KY
<b>Telephone Number:</b>	270.832.5990
<b>Ownership:</b>	Publicly Owned
<b>Other Tenants Nearby:</b>	Federal Express, Sykes Call Center
<b>Zoning:</b>	Industrial—Light
<b>Acreage:</b>	388 Available
<b>100 Year Flood-plain:</b>	No
<b>Elevation:</b>	Min: Max:
<b>Water Table:</b>	??
<b>Phase 1 Environmental:</b>	Yes

### ELECTRIC

<b>Provider:</b>	AEP/Kentucky Power
<b>Transmission Voltage to Location:</b>	69kV & 138kV
<b>Distribution Voltage to Location:</b>	??
<b>Secondary Voltage to Location:</b>	??
<b>Is Dual Feed Available from 1 Substation:</b>	Yes
<b>Is Dual Feed Available from 2 Substations:</b>	??

### NATURAL GAS

<b>Provider:</b>	??
<b>Gas Main Size:</b>	N/A
<b>Distance in Feet from Location to Gas Main:</b>	2,500 Feet
<b>Gas Pressure:</b>	??
<b>Heat Value:</b>	??

### TELECOMMUNICATIONS

<b>Local Exchange Carrier:</b>	??
<b>ASDL available from C.O. (Analog or Digital):</b>	??
<b>C.O. on Fiber Ring:</b>	??
<b>Can Dual Service Be Provided from 2 C.O.s:</b>	??
<b>Fiber Available:</b>	??
<b>Fiber Provider:</b>	??
<b>ISDN Available from C.O.:</b>	??
<b>Location of Closest Major Carrier POP (Miles):</b>	??

### SEWER

<b>Provider:</b>	Hazard Utilities District
<b>Sewer Main Size:</b>	10"
<b>Is Use of Lift Required:</b>	No
<b>Treatment Plant Type:</b>	Activated Sludge
<b>Treatment Plant Rated Capacity:</b>	3 mgd
<b>Treatment Plant Excess Capacity:</b>	1.8 mgd

### WATER

<b>Provider:</b>	Hazard Utilities District
<b>Water Main Size:</b>	12"
<b>Static Pressure:</b>	??
<b>Residual Pressure:</b>	??
<b>Flow Per Minute:</b>	??
<b>Treatment Plant Rated Capacity:</b>	5 mgd
<b>Treatment Plant Excess Capacity:</b>	0.5 mgd

### TRANSPORTATION

<b>Describe Highway Access:</b>	2 Lane State HWY 15 is adjacent to park connecting to Hal Rogers Parkway (4-Lane). Hal Rogers Parkway connects to Interstate 75, 67 miles west of park
<b>Distance to Regional Airport:</b>	Wendell H Ford Regional Airport is 2 miles north of the park
<b>Distance to National/International Airport:</b>	BlueGrass Airport in Lexington, KY is 110 Miles from park; Tri-Cities Airport in Kingsport, TN is 132 Miles from the park
<b>Name of Nearest Port:</b>	Port of Wurtland
<b>Distance in Miles to Nearest Port:</b>	117 Miles
<b>Type of Port:</b>	Inland Riverport
<b>Rail Service Carrier:</b>	CSX
<b>Main or Short Line:</b>	Main
<b>Spur to Location:</b>	No
<b>Distance to Rail Line:</b>	41,000 Feet
<b>Has Rail Access:</b>	No
<b>Has River Access:</b>	No

### PROTECTIVE SERVICES

<b>Fire Insurance Class Rating:</b>	??
<b>Distance to Nearest Police Station:</b>	Kentucky State Police and Perry County Sheriff are 10 miles away
<b>Distance to Nearest Fire Station:</b>	Hazard Fire Department is 4 miles away
<b>Distance to Nearest Hospital:</b>	Appalachian Regional Healthcare and UK Healthcare Hospital are 9 miles from the park

